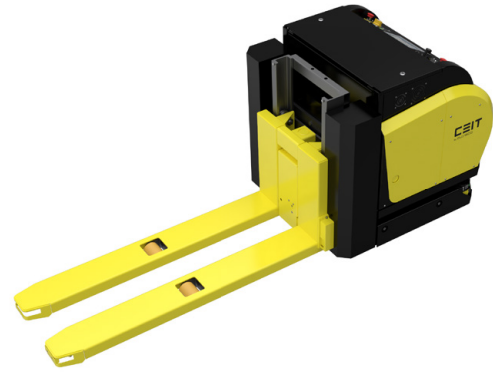


1500FSP

LOW LIFT AMR



INDUCTIVE
CHARGING



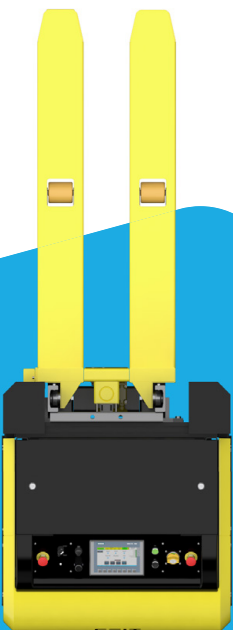
5G TECHNOLOGY



CE CERTIFIED

An autonomous low lift AMR with support ensuring the automatization of the production and logistics system in a reliable, efficient and safe manner.

Its use in the production process directly reduces costs and improves ergonomics and stock monitoring.



SPECIFICATION

Type	Low lift with Europallet support
Navigation	Contour/laser
Direction of drive	Forward/backward
Minimal turning radius	1.8
Speed [m/s]	Forward: 2.0/backward: 0,5
Load capacity [kg]	1,500
Lift	Hydraulic
Lift [mm]	300
Dimensions [L, W, H in mm]	2,438x900x920
Forks	Welded
Max. pallet size [L, W, H in mm]	1,200x800
Manipulation	Via static part/from the ground
Batteries	Li-FePO4
Charging	Inductive/automatic
Control	Manual control, touchscreen, steering handle
Safety scanners	Safety PLC, safety laser

Asseco CEIT AMRs are available with their **own MCS fleet manager with VDA 5050 standard** for guiding and monitoring logistics equipment in real time.

We offer a comprehensive **automatic logistics system, including AMR equipment, our own fleet manager and peripherals.**

